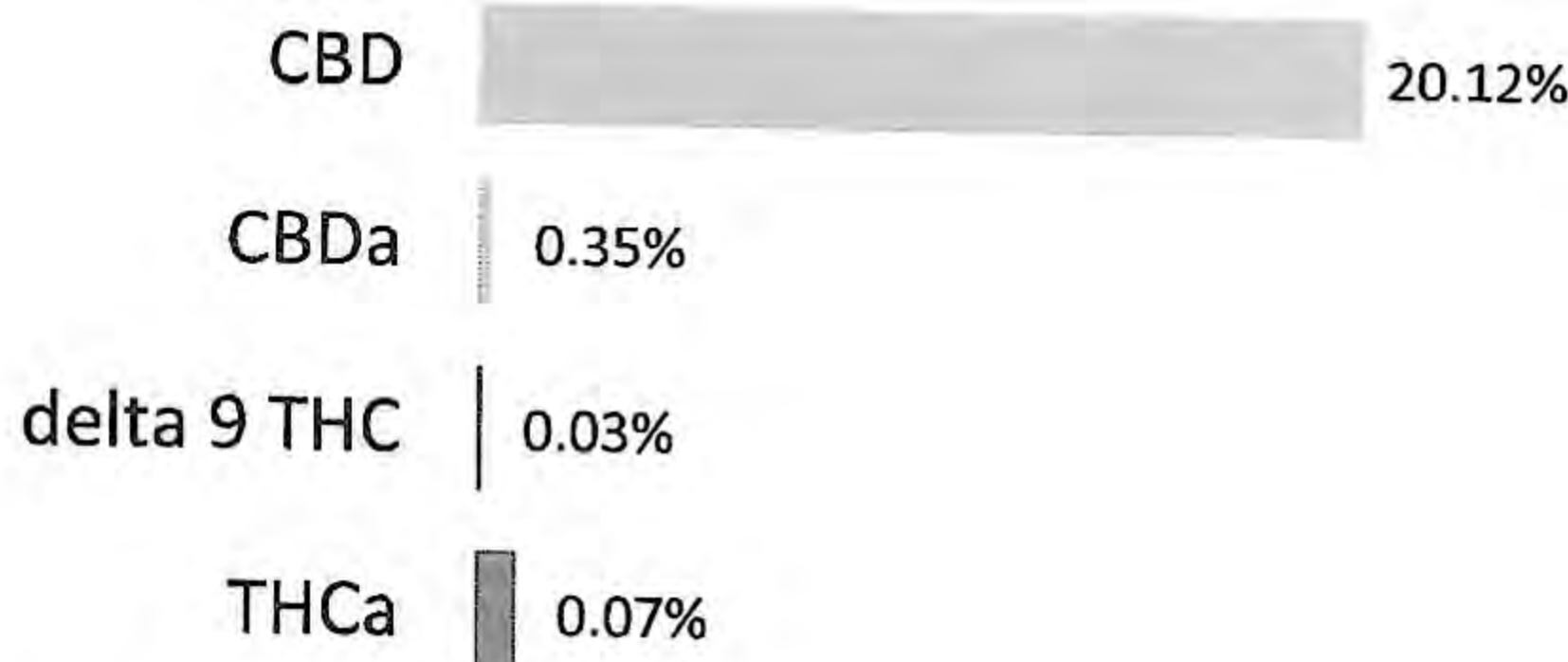
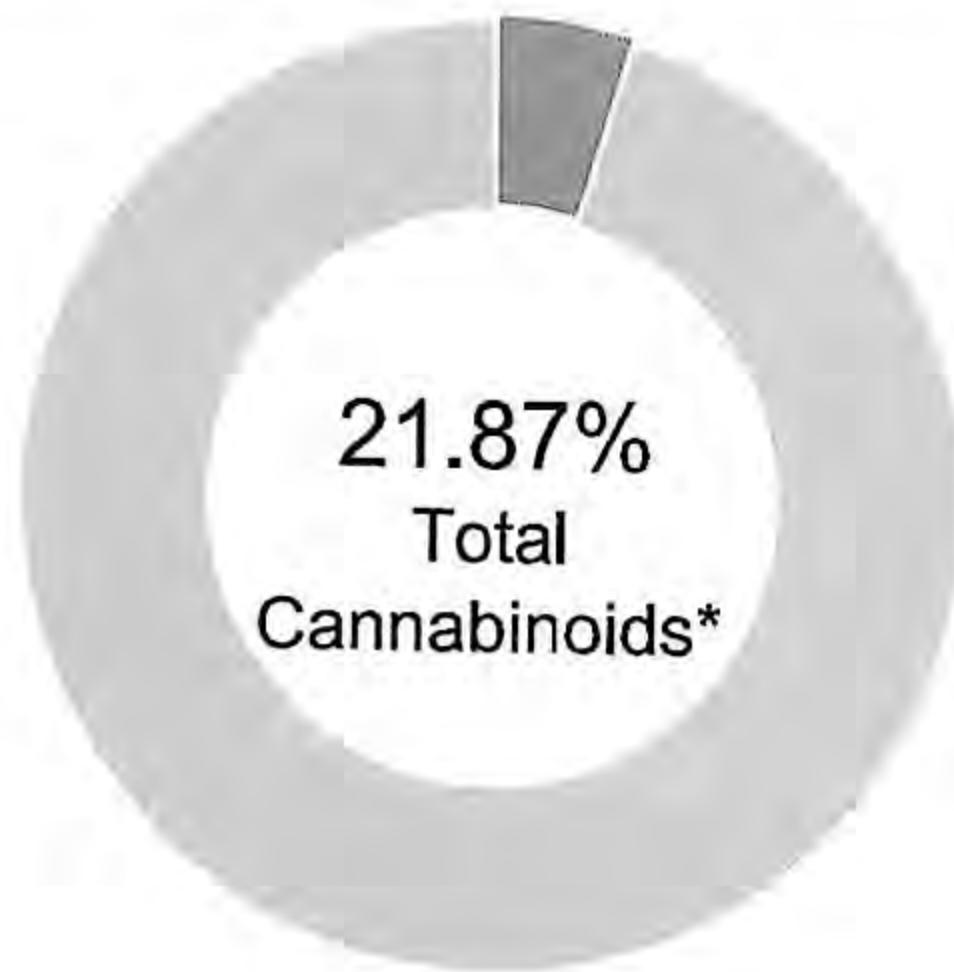


### Lemon Berry

<b>Batch ID:</b> LemBryFlwr	<b>Test ID:</b> 9952063.1338
<b>Reported:</b> 5-May-2021 <b>Exp:</b> 5-Nov-2021	<b>Method:</b> TM14
<b>Type:</b> Plant	
<b>Test:</b> Potency	

### CANNABINOID PROFILE



Compound	LOQ (%)	Result (%)
Delta 9-Tetrahydrocannabinolic acid (THCA-A)	0.01	0.07
Delta 9-Tetrahydrocannabinol (Delta 9THC)	0.01	0.03
Cannabidiolic acid (CBDA)	0.20	0.35
Cannabidiol (CBD)	0.03	20.12
Delta 8-Tetrahydrocannabinol (Delta 8THC)	0.01	0.00
Cannabinolic Acid (CBNA)	0.12	0.00
Cannabinol (CBN)	0.05	0.00
Cannabigerolic acid (CBGA)	0.08	0.32
Cannabigerol (CBG)	0.04	0.00
Tetrahydrocannabivarinic Acid (THCVA)	0.08	0.00
Tetrahydrocannabivarin (THCV)	0.04	0.00
Cannabidivarinic Acid (CBDVA)	0.08	0.00
Cannabidivarin (CBDV)	0.04	0.00
Cannabichromenic Acid (CBCA)	0.07	0.98
Cannabichromene (CBC)	0.08	0.00
<b>Total Cannabinoids</b>		<b>21.87</b>
Total Potential THC**		0.10
Total Potential CBD**		20.47

NOTES:  
N/A

% = % (w/w) = Percent (Weight of Analyte / Weight of Product)

\* Total Cannabinoids result reflects the absolute sum of all cannabinoids detected.

\*\* Total Potential THC/CBD is calculated using the following formulas to take into account the loss of a carboxyl group during decarboxylation step.

Total THC = THC + (THCa \*(0.877)) and Total CBD = CBD + (CBDa \*(0.877))

### FINAL APPROVAL



Daniel Weidensaul  
5-May-2021  
11:50 AM



Greg Zimpfer  
5-May-2021  
11:50 AM

PREPARED BY / DATE

APPROVED BY / DATE

Testing results are based solely upon the sample submitted to Botanacor Laboratories, LLC, in the condition it was received. Botanacor Laboratories, LLC warrants that all analytical work is conducted professionally in accordance with all applicable standard laboratory practices using validated methods. Data was generated using an unbroken chain of comparison to NIST traceable Reference Standards and Certified Reference Materials. This report may not be reproduced, except in full, without the written approval of Botanacor Laboratories, LLC. ISO/IEC 17025:2005 Accredited A2LA Certificate Number 4329.02



Certificate #4329.02



### Lemon Berry

<b>Batch ID:</b>	LemBryFlwr	<b>Test ID:</b>	9952063.1338
<b>Reported:</b>	5-May-2021	<b>Exp:</b>	5-Nov-2021
<b>Type:</b>	Plant	<b>Method:</b>	TM16
<b>Test:</b>	Pesticides		

### PESTICIDE RESIDUE

Compound	Dynamic Range (ppb)	Result (ppb)	Compound	Dynamic Range (ppb)	Result (ppb)
Acephate	58 - 2703	ND*	Malathion	350 - 2703	ND*
Acetamiprid	58 - 2703	ND*	Metalaxyl	350 - 2703	ND*
Avermectin	350 - 2703	ND*	Methiocarb	58 - 2703	ND*
Azoxystrobin	58 - 2703	ND*	Methomyl	58 - 2703	ND*
Bifenazate	350 - 2703	ND*	MGK 264 1	350 - 2703	ND*
Boscalid	350 - 2703	ND*	MGK 264 2	350 - 2703	ND*
Carbaryl	58 - 2703	ND*	Myclobutanil	58 - 2703	ND*
Carbofuran	58 - 2703	ND*	Naled	350 - 2703	ND*
Chlorantraniliprole	350 - 2703	ND*	Oxamyl	58 - 2703	ND*
Chlorpyrifos	350 - 2703	ND*	Paclobutrazol	58 - 2703	ND*
Clofentezine	350 - 2703	ND*	Permethrin	350 - 2703	ND*
Diazinon	350 - 2703	ND*	Phosmet	350 - 2703	ND*
Dichlorvos	350 - 2703	ND*	Prophos	350 - 2703	ND*
Dimethoate	58 - 2703	ND*	Propoxur	58 - 2703	ND*
E-Fenpyroximate	350 - 2703	ND*	Pyridaben	58 - 2703	ND*
Etofenprox	58 - 2703	ND*	Spinosad A	58 - 2703	ND*
Etoxazole	58 - 2703	ND*	Spinosad D	58 - 2703	ND*
Fenoxycarb	350 - 2703	ND*	Spiromesifen	58 - 2703	ND*
Fipronil	350 - 2703	ND*	Spirotetramat	350 - 2703	ND*
Flonicamid	58 - 2703	ND*	Spiroxamine 1	58 - 2703	ND*
Fludioxonil	350 - 2703	ND*	Spiroxamine 2	58 - 2703	ND*
Hexythiazox	350 - 2703	ND*	Tebuconazole	350 - 2703	ND*
Imazalil	58 - 2703	ND*	Thiacloprid	58 - 2703	ND*
Imidacloprid	58 - 2703	ND*	Thiamethoxam	58 - 2703	ND*
Kresoxim-methyl	350 - 2703	ND*	Trifloxystrobin	58 - 2703	ND*

\* ND = None Detected (Defined by Dynamic Range of the method)  
N/A

### FINAL APPROVAL

Alex Smith  
5-May-2021  
1:20 PM

PREPARED BY / DATE

David Green  
5-May-2021  
1:20 PM

APPROVED BY / DATE

Testing results are based solely upon the sample submitted to Botanacor Laboratories, LLC, in the condition it was received. Botanacor Laboratories, LLC warrants that all analytical work is conducted professionally in accordance with all applicable standard laboratory practices using validated methods. Data was generated using an unbroken chain of comparison to NIST traceable Reference Standards and Certified Reference Materials. This report may not be reproduced, except in full, without the written approval of Botanacor Laboratories, LLC.



### Lemon Berry

<b>Batch ID:</b>	LemBryFlwr	<b>Test ID:</b>	9952063.1338
<b>Reported:</b>	5-May-2021	<b>Exp:</b>	5-Nov-2021
<b>Type:</b>	Plant	<b>Method:</b>	Flower - Test Methods: TM05, TM06
<b>Test:</b>	Microbial Contaminants		

## MICROBIAL CONTAMINANTS

Contaminant	Result (CFU/g)*
<b>Total Aerobic Count**</b>	4.1x10 <sup>7</sup> CFU/g
<b>Total Coliforms**</b>	BLOQ
<b>Total Yeast and Molds**</b>	9.8x10 <sup>5</sup> CFU/g
<b>E. coli</b>	None Detected
<b>Salmonella</b>	None Detected

\* CFU/g = Colony Forming Unit per Gram

\*\* Values recorded in scientific notation, a common microbial practice of expressing numbers that are too large to be conveniently written in decimal form.

Examples: 10<sup>2</sup> = 100 CFU  
 10<sup>3</sup> = 1,000 CFU  
 10<sup>4</sup> = 10,000 CFU  
 10<sup>5</sup> = 100,000 CFU

### NOTES:

Free from visual mold, mildew, and foreign matter  
 TYM: 980,000 CFU/g  
 Total Aerobic: 41,000,000 CFU/g  
 Coliforms: BLOQ | Below limit of quantitation

## FINAL APPROVAL

Robert Belfon  
 5-May-2021  
 2:00 PM

Mike Branvold  
 5-May-2021  
 2:00 PM

PREPARED BY / DATE

APPROVED BY / DATE

Testing results are based solely upon the sample submitted to Botanacor Services, LLC, in the condition it was received. Botanacor Services, LLC warrants that all analytical work is conducted professionally in accordance with all applicable standard laboratory practices using validated methods. Data was generated using an unbroken chain of comparison to NIST traceable Reference Standards and Certified Reference Materials. This report may not be reproduced, except in full, without the written approval of Botanacor Services, LLC.